

R.N.I.No.MAHENG/2007/20097

Regd No.MH/MR/K'cevi-58/2013-15

PAGES 58

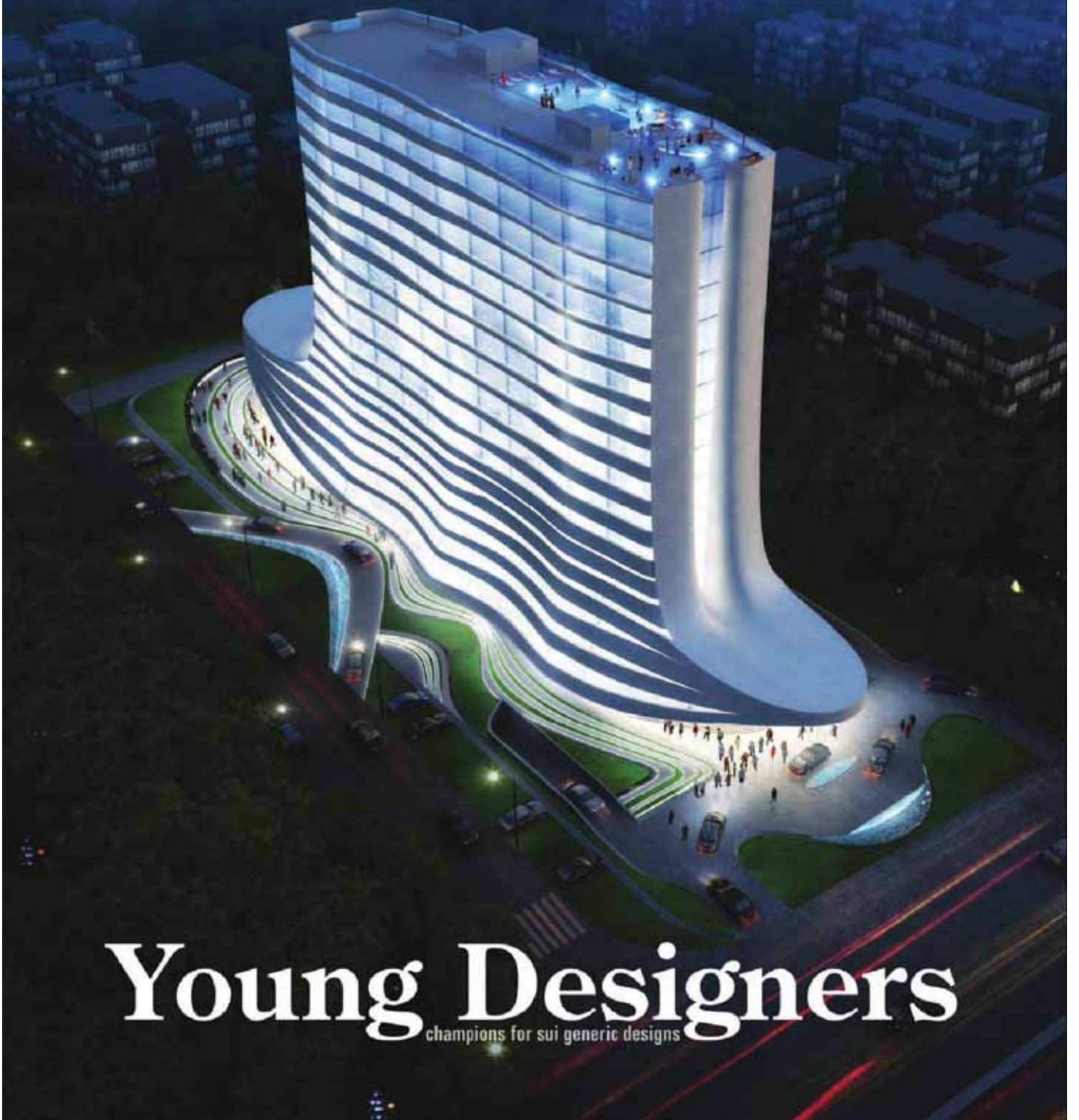
VOL. 9 ISSUE 6

JULY 2015 ₹100

# Architecture

ARCHITECTURE | INTERIORS | LANDSCAPE

**AU**  
**UPDATE**



# Young Designers

champions for sui generic designs



JULY 2015

ISSUE 6 VOLUME 09

# Contents



**LET'S TALK**  
The World of New Possibilities



**ELEMENTS IN DISCOURSE**  
Chaukor Studio



**POST EVENT**  
rat[LAB] Education



**LET'S TALK**  
The Future of Humanity Lies in Cities



**DESIGN INTEGRITY**  
Playgroup Studio



**IN FOCUS**  
Space, Shapes and Technology



**SYMPHONY OF LIGHT AND SHADOW**  
NA+P Architects



**INTERIORIZED SPACIOLOGY**  
Sweven Studio



**WOVEN MANIFESTATION**  
Gaurav Roy Choudhury Architects



**MODULAR KITCHENS: A HELPING HAND TO ALL**  
Seema Khosla



**COMPETITIVENESS VS ACCEPTANCE**  
Nikita Bansal



**SEAMLESS WAVES**  
Studio Symbiosis



**POROSITY**  
Tejas Sidnal & Keyur Mistry



**SUSTAINABLE URBAN DEVELOPMENT VIA NEIGHBOURHOOD DESIGN**  
Ar. Parul Minhas & Pappal Suneja



Spread across 3,600 sq ft, 'The Fragment House' designed by Gaurav Roy Choudhury Architects is an ebullient spatial design where variation of experiences amplifies with variations of light and shadow to create additional facets in its experience. The project epitomize the old design of the house to give a revitalizing structure.



*Text courtesy: the architect, Photographs courtesy: Tina Nandi*

# Woven Manifestation

Fragment House, Bangalore  
Gaurav Roy Choudhury Architects

Originally the project assigned was to do a minor restoration of a 90's house and the 'Fragment House' was developed into a layered brief from the clients over a duration of two years. The client's requirement was to 'update' their house through various layers of brief; these layers were to adjust with each other and yet to form something comprehensively new.

## THE UPDA(TION):

The existing building structure had haphazard walls and the division of spaces were cluttered which was changed into a simple layout with a clean plan. Unnecessary areas which were blocking the symmetry of space were removed and utilized for storage. Any inconsistencies occurring were also removed from spatial proportions. The wide passages were made more





*Gaurav Roy Choudhury is the Principal Architect and Founder of Gaurav Roy Choudhury Architects. He is an alumina of K.R.V.I.A, Mumbai. Gaurav has worked with Dean D'Cruz Architects, Goa; Mathew and Ghosh Architects, Bangalore. His expertise is in architecture, interior design, graphic design, urban design and housing projects mainly in and around Bangalore. He has contributed to many collaborative architecture projects and as mentor and teacher for architecture students of K.R.V.I.A, Mumbai and in R.V.C.E, Bangalore. Gaurav has been awarded with many awards and accolades.*

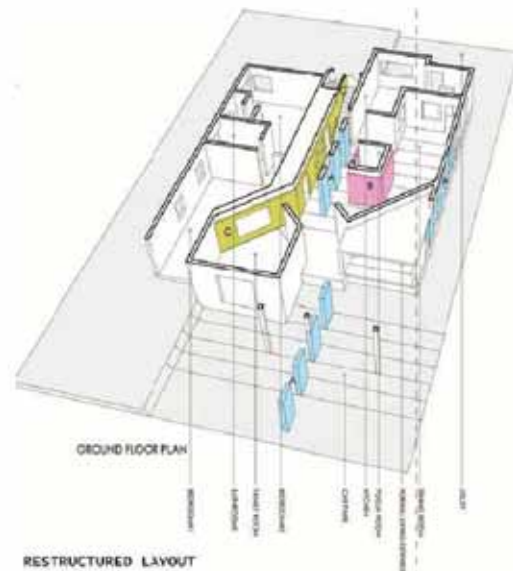
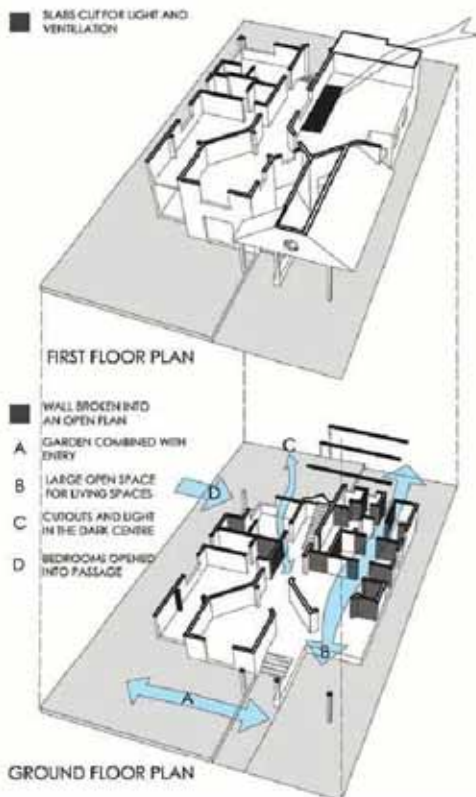


proportionate to their length. The external façade was not touched and it's daunting presence with large roofs and volumes was maintained as it is to develop a character for the front elevation of the house. First floor which was barely used by the couple was updated with new flooring and finishes. The garden was removed and realigned with the entry to emphasize its affinity to the entry more than the car-park area as it previously did.

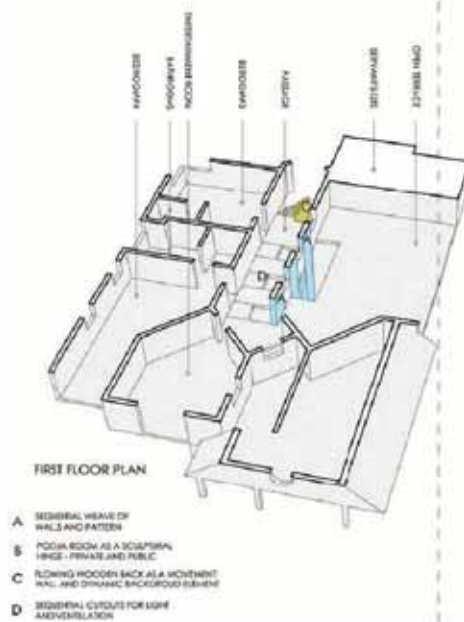
### THE NEW:

The merging of all the layers of work gave birth to the 'new' design. This 'new' sequence derived from the updation process and breaking of walls along with the changed volumes gave a new meaning to the house. The 'weave', as the architect conceptually called it, is a pattern which runs through out the house along with the subsequent walls, which defines the parametric and Cartesian changes of the structure.

## MODIFICATIONS



## RESTRICTED LAYOUT





The sequential walls that run through both the floors were allowed to form a continuity and cut out were made out of it. This allowed sunlight to come into the house and the breeze to ventilate the house.

The courtyard came in as an elemental hinge of public and private spaces and to light up the underbelly of the house as the sequential walls towered vertically. The courtyard though majestic in its conception provides a muted and calm space, which nestles the pooja area and the meditation space of the house. Pooja room in the centre of the courtyard adds volume and in itself is the most exuberant space in the fragment house. It sits in the middle of a large space with its

back facing the public spaces of the house and the front, to the courtyard.

The 'background wall' takes the edge of the bedroom as they expand into the passage. It becomes the background to the house for visitors and the leading wall for the residents, as it moves along the passage and ascends the staircase with its dynamic form and yet calm disposition. The background wall is barely seen in its entirety. It is usually seen in fragments of compositions and elements.

The 'Fragment House', after its upd(ati)on of function and experience, is a house of elements old and new, merged in a new suspension of experience. Every step created a new dynamic between the elements and no global experience exists to sum it up. It's a variation of experiences that amplifies with variations of light and shadow to create additional facets in its experience. ▲



**fact file:**

project	: Fragment House
location	: J.P. Nagar, Bangalore
design team	: Gaurav Roy Choudhury Architects
contractors	
Civil	: USA and Ravikumar
PHE	: Plumbiech Engineers
Electrical	: Canara Electricals
interiors	: Interiors Espania
construction period	: March 2011 – July 2012
area	: 3,600 sq ft
cost of project:	: Rs. 1,11,00,000 (One crore and eleven lakhs)