

Chris van Uffelen

Living in Style

Architecture + Interiors

BRAUN

CONTENTS

- 008 PREFACE
- 010 232 HOUSE
Omer Arbel Office (OAO)
- 014 LOFT ESN
Ippolito Fleitz Group – Identity Architects
- 018 TRAVELER'S TALE
goodnova godiniaux
- 022 JOINT-FAMILY PENTHOUSE
Gaurav Roy Choudhury
- 026 GS HOUSE
Jacobsen Arquitetura
- 030 COUNTRY HOME IN
DORES DO INDAIÁ
Gislene Lopes Arquitetura e Design de
Interiores, Junia Lobo
- 034 N.B.K. RESIDENCE
Bernard Khoury / DWS
- 038 CHALET BRIGELS
Go Interiors
- 042 APPLEBERRY DRIVE
RESIDENCE
building Lab
- 046 THE BARNACLE
Built-Environment Practice
- 050 KITCHEN BUNGALOW
Ghezzi Novak
- 054 LIENZO DE BARRO
Chaquiñan Taller de Arquitectura
- 058 SPLIT VIEW MOUNTAIN
LODGE
Reiulf Ramstad Arkitekter
- 062 LANDHAUS WAGNER
Architektur am Wasserschlosschen
Christa Kelbing, formade materials
- 066 CASA TUSCANIA
Cincopatasalgato
- 070 FATIMA HOUSE
Jorge Hernandez de la Garza, Abraham
Ornelas, Javier Pichardo, Caria Celis
- 074 KLOSTERS PENTHOUSE
Go Interiors
- 078 THE SIX
fikrr architects
- 082 PENTHOUSE MUNICH
GÄRTNERPLATZ
Gabriela Raible Innenarchitektur
- 086 BEIT HA-AHAVA –
"HOUSE OF LOVE"
Rios Clementi Hale Studios, E2 Lighting
Design
- 090 HIGH COUNTRY HOUSE
Luigi Rosselli Architects, Darryl Gordon
Design, William Dangar
- 094 DW-HOUSE
Ong&Ong
- 098 GREEN HOUSE IN AUSTIN
Jadric Architektur
- 102 BUKIT GAMBIR
Spark
- 106 LOFT CONVERSION
Egue y Seta, Daniel Pérez, Felipe Arauj
- 110 VACATION HOME ON
'EASTER ISLAND'
Zaigas Gailis birojs
- 114 HOUSE IN SHIMOIGUSA
Makoto Yamaguchi Design
- 118 LOFT APARTMENT
Adrian Amore Architects
- 122 AGBARIA HOUSE
Ron Fleisher Architects
- 126 UNION SQUARE LOFT
Resolution: 4 Architecture
- 130 COTTON STUDIO
RESIDENCE
Tang Kawasaki Studio
- 134 MANDEVILLE CANYON
RESIDENCE
Montalba Architects
- 138 FEISTEINVEIEN
Rever & Drage Architects
- 142 HOUSE FOR
INSTALLATION
Jun Murata / JAM
- 146 KILDEVEIEN VILLA
Lund+Slaatto Architects
- 150 DINER – HOUSE
LülingSauer Architecture
- 154 WESTRIDGE RESIDENCE
Montalba Architects
- 158 DOMINION
Geometrix Design
- 162 VILLA CP
Zest Architecture
- 166 GLAMPING
ArchiWorkshop.kr
- 170 M-HOUSE
Ong&Ong
- 174 RESIDENTIAL HOUSE IN
LUDWIGSBURG
Schneider I Architekten
- 178 P-901
Craft Arquitectos
- 182 APARTMENT BUDAPEST
INpuls
- 186 ART LOVERS
Sophie Green Interior Architecture
Brussels Munich
- 190 BW APARTMENT
YCL, YCL interior
- 194 HOUSE 12.20
Alex Nogueira
- 198 ARDMORE RESIDENCE
UNStudio, Terry Hunziker Inc.
- 202 WOODEN FRAME HOUSE
a + samuel delmas
- 206 BOSQUE DA RIBEIRA
RESIDENCE
Anastasia Arquitetos
- 210 PRIVATE APARTMENT
kister scheithauer gross architekten
und stadtplaner
- 214 THE SAN HOUSE
Aamer Architects
- 218 ROUNDED LOFT
a1architects

- 222 MODERN VILLA
AS A CLASSIC
Neugebauer Architekten
- 226 RESIDENTIAL HOUSE
IN WALDENBUCH
Schneider | Architekten
- 230 SLM HOUSE
archequipe
- 234 LIVING IN BRUNSWICK
Nieberg Architect
- 238 FRAGMENT HOUSE
Gaurav Roy Choudhury Architects
- 242 THE BOOMERANG
HOUSE
Aamer Architects
- 246 BOUNDARY HOUSE
Atelier Tekuto
- 250 BARN AND DWELLING G
Aeby Aumann Emery architectes
- 254 HOUSE S
Alvisi Kirimoto + Partners
- 258 WANKA HOUSE
Estudio Galera
- 262 LIMANTOS
Fernanda Marques Arquitetos Associados
- 266 RESIDENTIAL HOUSE
NEAR FRANKFURT
Architektur Sommerkamp
- 270 LIVING ON THE EDGE
Arjen Reas
- 274 SOUTHERN HIGHLANDS
HOUSE
Benn + Penna Architecture
- 278 FRAMING THE SKY
Atelier Tekuto

- 282 DM RESIDENCE
CUBIC architects
- 286 ATZ LIVING
Craft Arquitectos
- 290 HOUSE NEAR THE
RIVER REUSS
dolmus Architekten
- 294 PENTHOUSE ON
SAVIGNYSTRASSE
raab.schmale, Schmidt Holzinger
Innenarchitekten
- 298 CASA VR TAPALPA
Elias Rizo Arquitectos
- 302 SU HOUSE
Alexander Brenner Architekten
- 306 GOLD BAND ON BLACK
fabi architekten
- 310 68 STAPLETON HALL ROAD
Solidspace Developments, Stephen Taylor
Architects
- 314 RESIDENTIAL HOUSE NEAR
WESTPARK
Architekturbüro Stefan Krötsch
- 318 BLACK ON WHITE
fabi architekten
- 322 TOWNHOUSE ON
WILANDSTRASSE
Jo. Franzke Architekten
- 326 53.32° N / 9.59° E
Behnisch Architekten, KBNK Architekten
- 330 NEUFERT HOUSE
Gatermann + Schossig Architekten
Generalplaner
- 334 NASU TEPEE
Hiroshi Nakamura & NAP Co.
- 338 HOUSE BY THE LAKE
Gabriela Raible Innenarchitektur

- 342 BELLEVUE 50
KBNK Architekten
- 346 CASA CAMAR
Jachen Könz
- 350 BRAHLER RESIDENCE
robert maschke Architects
- 354 GLOBE OUTLET VILLA
In-between Design Office
- 358 MINTZ RESIDENCE
robert maschke Architects
- 362 PARKVIEW
Joey Ho Design
- 366 AM OBEREN BERG HOUSE
Alexander Brenner Architekten
- 370 CASA FLOTANTA
Benjamin Garcia Saxe Architecture
- 374 ZOG HOUSE
Groves Natcheva, Solidspace
Developments
- 378 HOUSE NEAR THE SEA
Keggenhoff | Partner
- 382 TREE HOUSE
Mount Fuji Architects Studio
- 386 QUEBRADA HOUSE
UNarquitectura
- 390 HOUSE NEAR THE HARBOR
Keggenhoff | Partner
- 394 HSV APARTMENT
Sadar+Yuga
- 398 WALLABY LANE HOUSE
Robinson Architects
- 402 ABOVE THE ROOFS OF
FRANKFURT
Kern-Design InnenArchitektur

- 406 CHEN RESIDENCE
KC design studio
- 410 SCENOGRAPHY
aa studio
- 414 REDESIGN OF APARTMENT
IN MONCHENGLADBACH
raum.atelier
- 418 FAR POND
Bates Masi + Architects
- 422 CASA SON VIDA
TecArchitecture, Marcel Wanders
- 426 TUNQUEN HOUSE
Masfernandez Arquitectos
- 430 LOW COST HOUSE
Vo Trong Nghia Architects
- 434 ONE RINCON HILL
Mary Ann Gabriele Schicketanz
- 438 RO APARTMENT
SuperLimão Studio
- 442 BEGOVAYA
Geometrix Design
- 446 RAYBAN HOUSE
Alejandro D'Acosta Lopez and
Claudia Turrent Riquelme
- 450 INDEX

Other titles by

Trop
Ho

Tropical Houses
ISBN 978-3-0376

CHA

Chalets - Trendse
Treasures
ISBN 978-3-0376

COUNTRY
ARCHITECTUR

Masterpieces: Con
Architecture + De
ISBN 978-3-0376

Townh

Townhouse Desig
ISBN 978-3-0376

www.braun

JOINT-FAMILY PENTHOUSE

Colors aren't just colors, they show attitude - something this house has in masses.



The clients of this penthouse are a family of two brothers, their respective wives and children, and their parents. The intent of the design was to break this typological context into a more personal and customized one. All the walls were broken and repositioned. Cutouts were made to join the floors and develop changes in the basic volume. The staircase is fashioned in such a way that it becomes a space for gathering and discussion. Two incisions are made to connect the upstairs and the downstairs areas, from where the brothers can overlook and engage into the dialogue of the house. The yellow wall, the wood and the clearly defined upstairs are each derived from the plural nature of the family members and coexist just like a family.

Architect | Gaurav Roy Choudhury
Gross floor area | 297 m²
Address | Malleswaram, Bangalore, India
Completion | 2013
Number of residents | 6 adults, 3 children



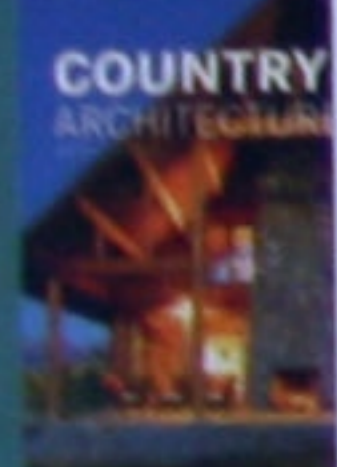
Other titles by



Tropical Houses
ISBN 978-3-03768-037-6



Chalets - Trendsett
Treasures
ISBN 978-3-03768-037-6



Masterpieces: Coun
Architecture + Desi
ISBN 978-3-03768-037-6

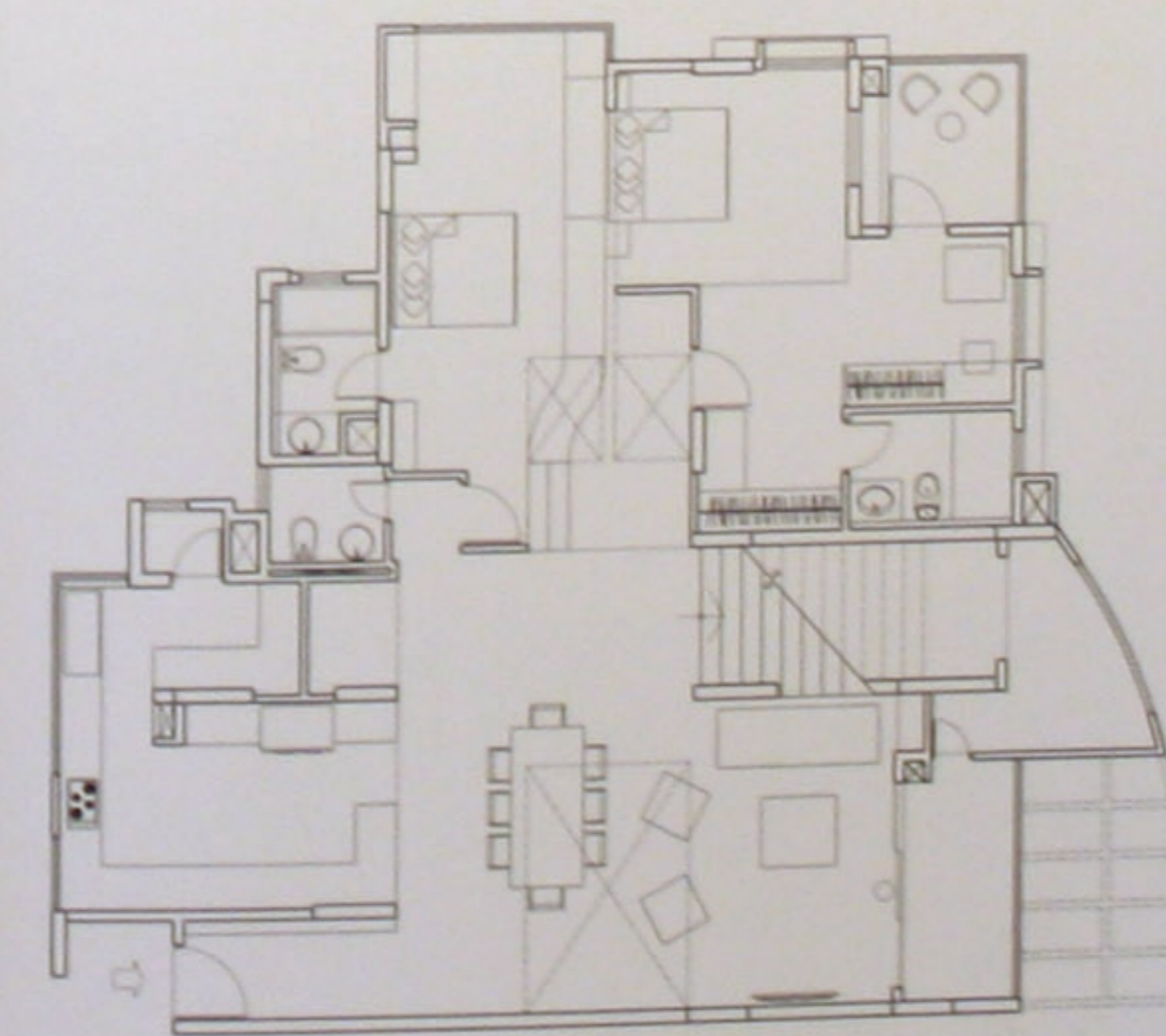


Townhouse Design
ISBN 978-3-03768-037-6

www.braun-



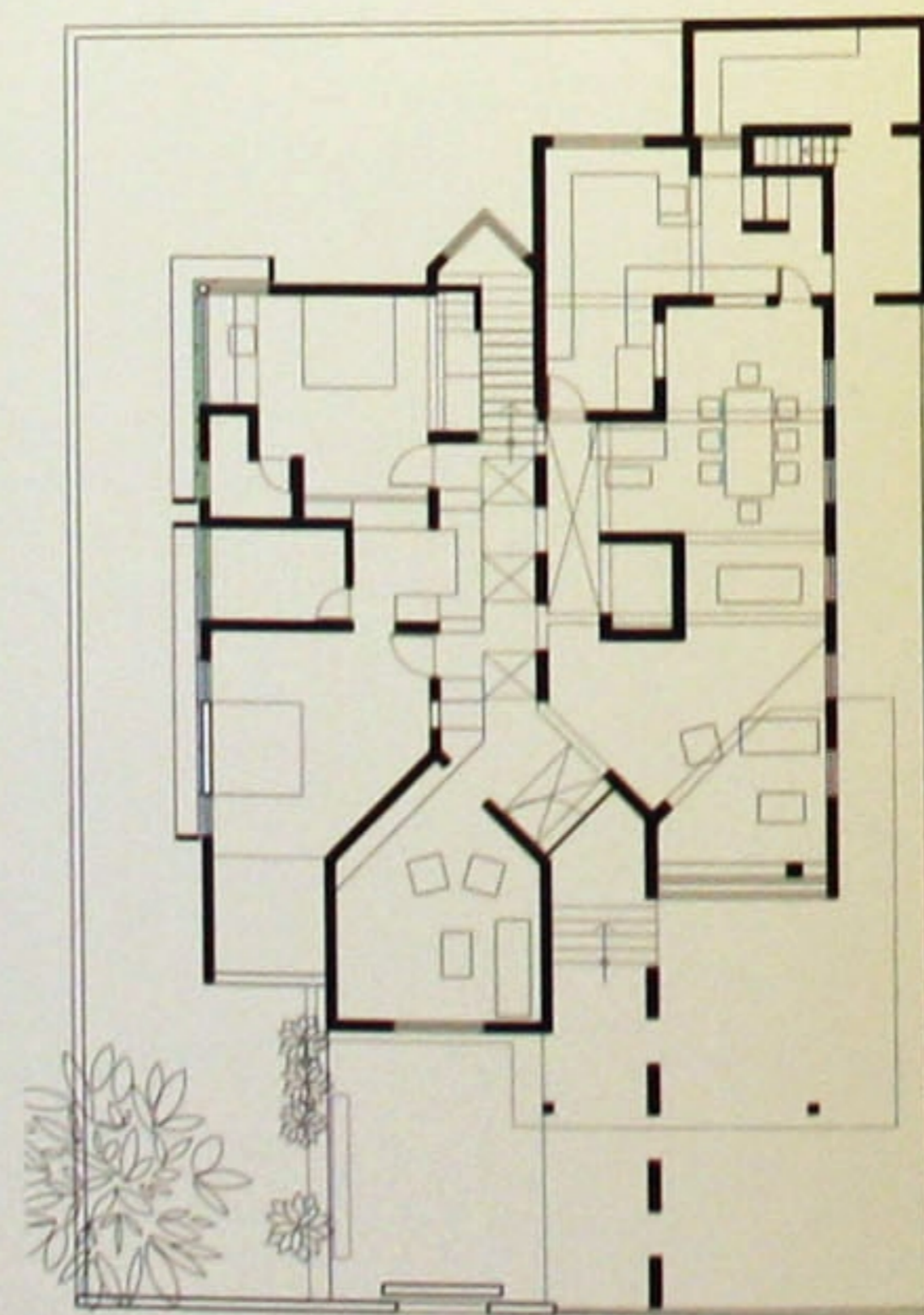
The colors were chosen to complement the moods of the different areas. The yellow reflects the warmth and the playfulness of the activities in the lower spaces. The blue was chosen to create a contrast to the yellow near the children's play area. The wood and soft tones used upstairs emphasize the use of this area as a private space in which one can relax.



13.5 m² living
29 m² dining
71 m² sleeping
14.5 m² kitchen



Originally intended as a minor restoration of a 1990s house in Bangalore, the Fragment House developed into a layered brief from the clients over the duration of two years. The existing building was transformed into a simple layout with a clear plan. Unnecessary areas were removed and utilized for storage. The external façade was not to be touched. Its daunting presence with large roofs and volumes were merely melted or accentuated to develop character for the front of the house. The altered volumes gave the house a new character. The new arrangement makes the space more accessible and draws light inside, creating a brighter and more modern interior.



26 m² living
94 m² sleeping
16.5 m² dining
23 m² kitchen

FRAGMENT HOUSE

Out with the old and in with the new



Architect | Gaurav Roy Choudhury Architects
Gross floor area | 334 m²
Address | Bangalore, India
Completion | 2012
Number of residents | 2 adults





The pooja room – a spiritual room for meditation – in the middle of the ground floor functions as a lamp, a sculpture and an anchor for the common spaces.

